

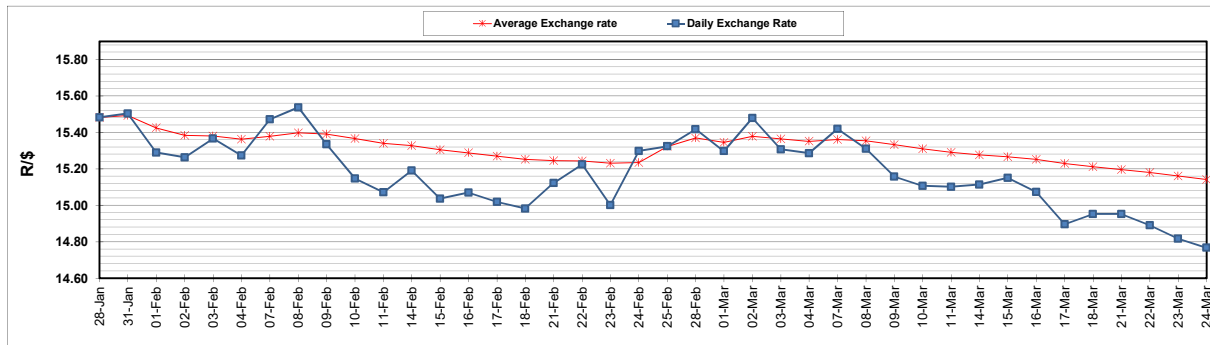
	PETROL 95 ULP	PETROL 93 ULP & LRP	DIESEL 0.05%	DIESEL 0.005%	ILL. PAR.
GAUTENG PUMP PRICE (SA c/l) AS FROM 02/03/2022	2,160.000	2,135.000	-	-	-
WHOLESALE PRICE (SA c/l) AS FROM 02/03/2022	-	-	1,948.880	1,955.280	1,318.688
SINGLE NATIONAL MAXIMUM RETAIL PRICE	-	-	-	-	1,690.000
BASIC FUEL PRICE - 24/03/2022 (SA c/l)	1,293.097	1,268.558	1,528.028	1,555.559	1,511.506
PRESS RELEASE CONTRIBUTION TO BFP 02/03/2022 - 24/03/2022 (SA c/l)	1,100.270	1,085.270	1,107.630	1,114.030	1,097.128
UNIT OVER/(UNDER) RECOVERY - 24/03/2022 (SA c/l)	(192.827)	(183.288)	(420.398)	(441.529)	(414.378)
AVERAGE BASIC FUEL PRICE 25/02/2022 - 24/03/2022	1,273.691	1,250.711	1,384.247	1,404.819	1,340.830
AVERAGE UNIT OVER/(UNDER) RECOVERY 25/02/2022 - 24/03/2022	(193.017)	(185.037)	(295.967)	(310.739)	(261.852)

### ANALYSIS MOVEMENT OF AVERAGE OVER/(UNDER) RECOVERY

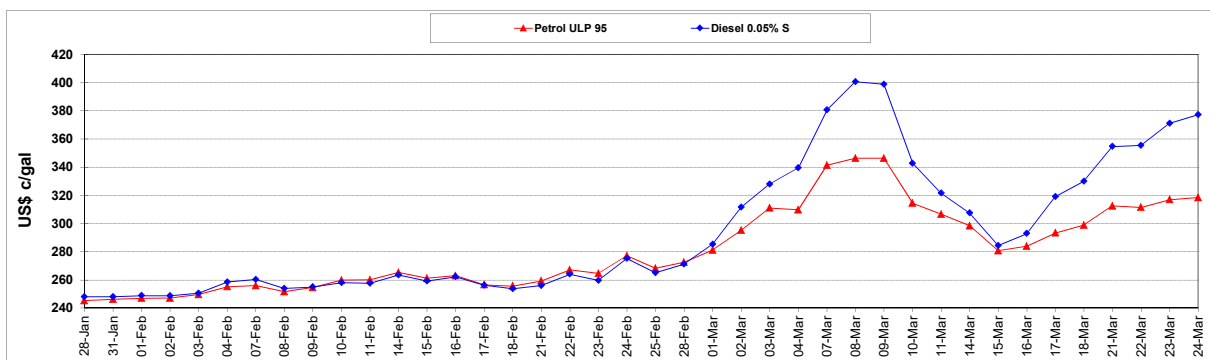
	PETROL 95	PETROL 93	DIESEL 0.05%	DIESEL 0.005%	ILL. PAR.
- MOVEMENT IN INTERNATIONAL PRODUCT PRICES	(200.866)	(192.744)	(304.497)	(319.396)	(270.114)
- MOVEMENT IN EXCHANGE RATE	7.849	7.707	8.530	8.657	8.262
AVERAGE UNIT OVER/(UNDER) RECOVERY 25/02/2022 - 24/03/2022	(193.017)	(185.037)	(295.967)	(310.739)	(261.852)

### R/\$ EXCHANGE RATE - (R/\$14.7673 - 24/03/2022)

#### EXCHANGE RATE USED IN BASIC FUEL PRICE



#### INTERNATIONAL PRODUCT PRICES OF BASKET USED IN BASIC FUEL PRICE



#### BASIC FUEL PRICE IN SA CENTS PER LITRE

